



Easy Read: A Guide for Children and Young People

Special Educational Needs Inclusion Service Down Syndrome

Supporting children and young people with a medical diagnosis of Down syndrome



Contents

<u>Introduction</u>	4
<u>What does the SEN Inclusion Service Down Syndrome (SENIS DS) do?</u>	5
<u>How to get support</u>	7
<u>Pre-school</u>	8
<u>School aged children</u>	9
<u>What happens next?</u>	10
<u>How much support will you get?</u>	12
<u>For more information</u>	13



In this Easy Read document, difficult words are in **bold**.

We explain what these words mean in the sentence after they have been used.



Some words are blue and underlined. These are links that will go to a website or page which has more information.



Introduction

This document is about the Education Authority's SEN Inclusion Service for Children with Down Syndrome (SENIS DS).

SENIS DS helps children and young people who:

- Have a medical diagnosis of Down syndrome.
- Need support to access learning.

Children and young people with Down syndrome may have difficulty communicating, learning, and understanding other people. Throughout this document, we will use the term Down syndrome.



What does the SENIS DS do?



The SEN Inclusion Service DS gives support to children and young people:

- The year before pre-school.
- At pre-school or nursery school.
- At primary school.
- At post primary school.



We support you by:

- Helping you learn the skills you need.
- Speaking to school staff and parents about helpful strategies.

We can give parents, carers and school staff:



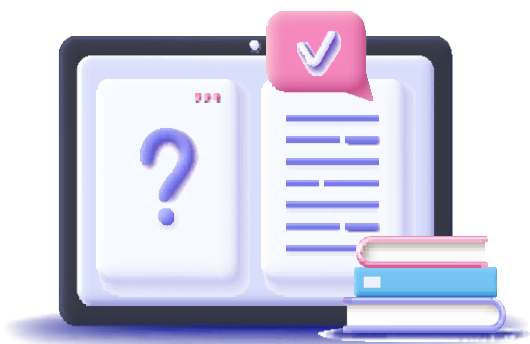
- Information, including strategies and resources to support learning.



- Advice and support to ensure the inclusion and wellbeing of children and young people with Down syndrome in school.



- Training, including videos, guides, and workshops.



- Guidance.

How to get support



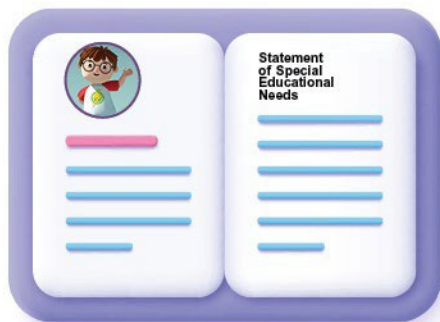
An **educational psychologist** will tell us that a child or young person needs support from us.



Educational psychologists have been trained to understand how children and young people behave and learn.



We can help children and young people with or without a **Statement of Special Educational Needs**.



A **Statement of Special Educational Needs** is a document that describes your needs and the special help you should receive.

Pre-school



Usually, an educational psychologist will tell us about pre-school children who need support.



The educational psychologist will make a **referral** to the Early Years Hub on behalf of the parents or carers.

This is a request for support which includes important information about a child.

The Early Years Hub will pass the referral on to us.



When the educational psychologist or the other service tells us about a child, we will try and get in touch with parents within 4 weeks.

School Aged Children



An educational psychologist will tell us about school aged children who need support.

The educational psychologist will make a referral to the service on behalf of your parents or carers or your school.



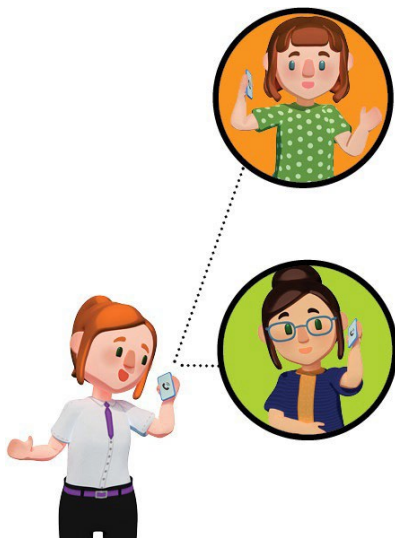
When the educational psychologist or the other service tells us about you, we will try to get in touch with your parents within 4 weeks.

What happens next?



When we hear about a child, we will assign a member of our team to help.

They will:



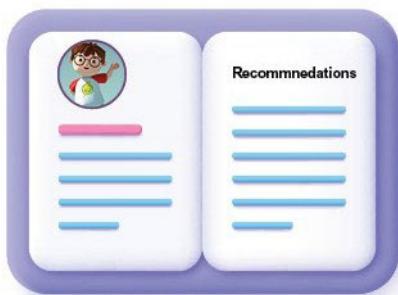
- Talk to your parents.
- Talk to school staff who know you.
- Talk to you. Your feelings and ideas matter too!





Once we have all the information, we will provide the school with **recommendations** on how to support you. Recommendations are ideas on how to help you.

This may be in the form of:



- Information and advice about how school staff can help you in school.



- Guides, videos and training.



- Working directly with you on learning new skills.

How much support will you get?



To make sure we give the right support, we will listen to opinions of:



- You



- School Staff



- Parents or carers



The support we give you will be tailored to your needs.

For more information

You can look at our website:



[SEN Inclusion Service Down Syndrome](#)

If you or your parents need more information, please contact us by:



Phone:

- 028 8241 1360

OR

Email:

infosenis.ds@eani.org.uk

